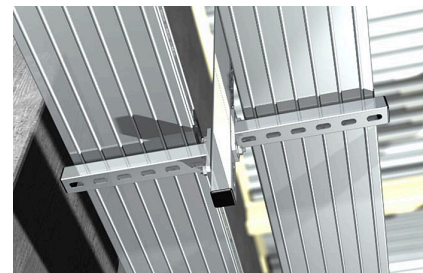
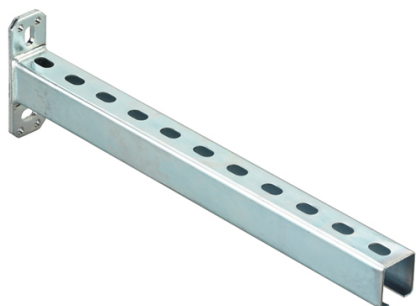


Cantilever arm made from C-profile rails



ADVANTAGES/BENEFITS

- The range of different lengths allows for flexibility in any application.
- The rigid base plate offers a secure hold for load-bearing construction.
- The base plate's long slots, which are at 90° to one another, allow the console to be easily aligned.

APPLICATIONS

- Mounting rails as C-profiles for the creation of side- and height-adjustable fixings.
- Fast and efficient fixing of electrical supporting structures or pipelines.

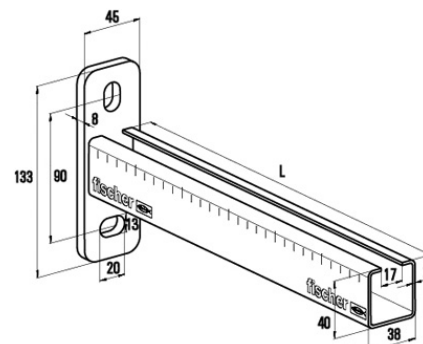
PROPERTIES

- Material base plate: steel DC01 (material no. 1.0330) acc. to DIN EN 10139
- Material channel: steel S235 JR (material no. 1.0037) acc. to DIN EN 10025
- Zinc plating: electro zinc-plated, min. 13 µm

TECHNICAL DATA



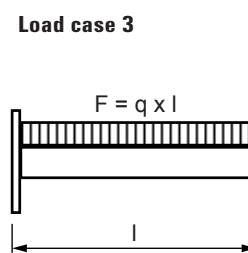
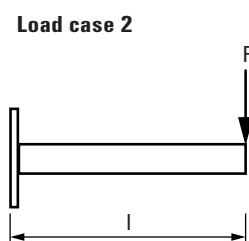
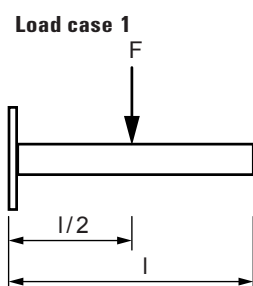
Cantilever arm ALK / ALK-Q



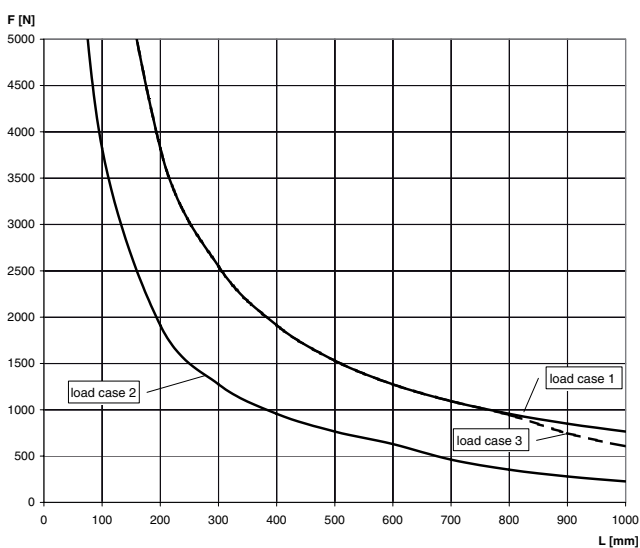
Article name	Art.-No.	Length [mm]	Sales unit [pcs]
ALK 38/40 - 200	079580	200	10
ALK 38/40 - 360	079581	360	10
ALK 38/40 - 440	063560	440	10
ALK 38/40 - 520	079582	520	10
ALK 38/40 - 600	020929	600	10
ALK 38/40 - 800	040399	800	1
ALK 38/40 - 1000	040400	1000	1

LOADS

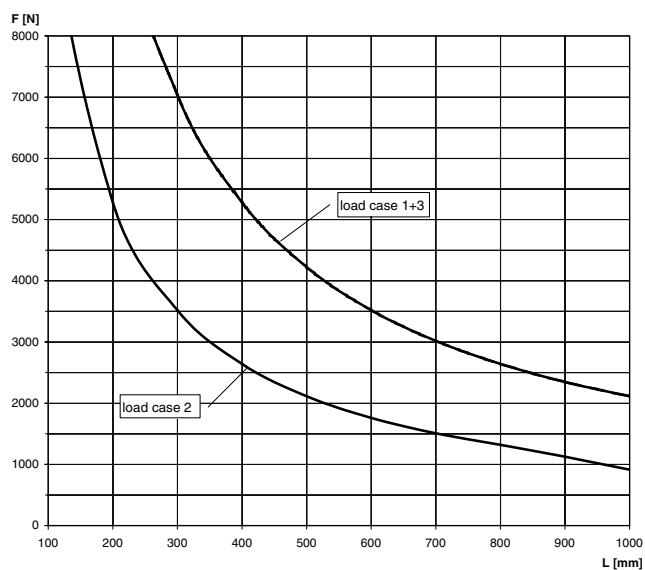
Item	Art.-No.	Max. recommended static load load case 1 F_{rec} [kN]	Max. recommended static load load case 2 F_{rec} [kN]	Max. recommended static load load case 3 [kN]
ALK 38/40 - 200	079580	3.75	1.88	3.75
ALK 38/40 - 360	079581	2.2	1.1	2.2
ALK 38/40 - 440	063560	1.7	0.85	1.7
ALK 38/40 - 520	079582	1.4	0.7	1.4
ALK 38/40 - 600	020929	1.25	0.63	1.25
ALK 38/40 - 800	040399	0.94	0.35	0.94
ALK 38/40 - 1000	040400	0.6	0.23	0.6
ALK 40/60 - 600	063561	3.5	1.75	3.5
ALK 40/60 - 800	063562	2.63	1.31	2.63
ALK 40/60 - 1000	063563	2.1	0.91	2.1



MS 38/40



MS 40 / 60



For the load curves, the permissible steel strain $\delta_{adm.} = 160$ N/mm and the maximum deflection under load $l/150$ are not exceeded. Fixings and screw fastenings must be calculated accordingly.