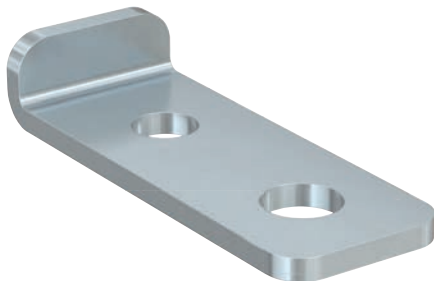


U-Bolt connector FETR-C

U-Bolt connector FETR-C for connecting ETR U-Bolts to FUS channels

2



Pipe on cantilever arm with U-bolt ETR and channel connector FETR-C



Pipe on cantilever arm with U-bolt ETR and channel connector FETR-C

Applications

- U-Bolt connector for use with mounting channels FUS in combination with U-Bolt ETR.
- For indoor and outdoor application.

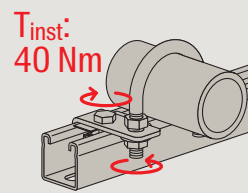
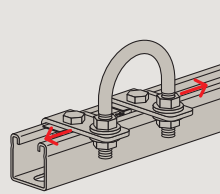
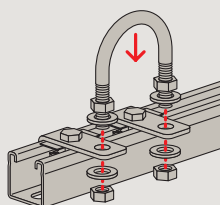
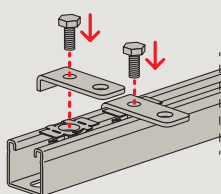
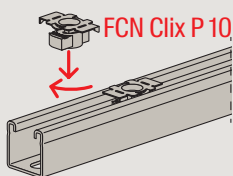
Advantages

- The FETR-C enables the connection of U-Bolts ETR to mounting channels FUS and allows free positioning of the ETR on the FUS channel profiles.
- Independent positioning of ETR without taking into account the hole pattern of the FUS channel profiles.

Properties

- Material: steel S235JR (material no. 1.0038) acc. to DIN EN 10025
- Zinc plating: hot-dip galvanised acc. to DIN EN ISO 1461

Installation FETR-C



See also:

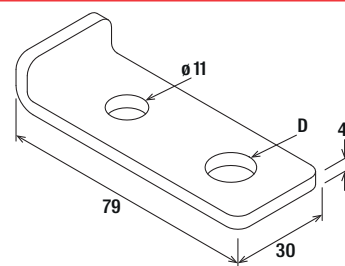
Product family hexagonal nut MU Page 289



See also:

Product family Washer U Page 288





FETR-C

2

Technical data

Item	Item no.	Hole-Ø D [mm]	Sales unit [pcs]
FETR-C 9 hdg	569182	9	20
FETR-C 13 hdg	569183	13	20
FETR-C 16.5 hdg	569184	16.5	20